



OPTIMA[®] RAILING

RAILING

MADE SIMPLE



OPTIMA[®] RAILING



1518 South Broadway
Green Bay, WI 54304
Toll Free: (877) 804-0137
Fax: (920) 435-1528
www.greenbaydecking.com

MADE IN U.S.A. |

Environmentally Friendly Hybrid
Engineered Deck System



Copyright © 2017 greenbaydecking.com
All rights reserved.



www.greenbaydecking.com

Premium Design

OPTIMA[®] Railing's hidden fastener design creates an upscale quality and seamless look.

Fast and Easy Installation

Railing Panels are Pre-Assembled for ease and speed of installation. OPTIMA[®] Railing systems can be installed in half the time of competitive products and no special tools are required.

Durability and Strength

Durable aluminum construction with an AAMA 2604 architectural-grade powder-coat finish that is guaranteed for 15 years. Engineered, tested and approved as per ICC-ES AC273 and is IBC/IRC code compliant.

Convenient Kits for Simple Planning and Assembly

It's easy to configure an OPTIMA[®] Railing for any deck. Select from 6' or 8' rail/stair sections and count the number of posts. Components are packaged in convenient kits with everything required for installation.

Styles and Sizes

OPTIMA[®] Railing picket deck panels are available in 36" and 42" heights with 6' and 8' lengths. Stair panels are available in 36" height with 6' and 8' lengths.

Accessories

Add to your outdoor environment with Gate Kits, LED Post Cap Lights and ADA Handrails. All parts and accessories are available in Black, White and Bronze.



See Warranty Document for Details.

Why OPTIMA[®] RAILING ?

- Pre-Assembled Panels for Fast and Easy Installation
- Durable aluminum construction with an Akzo Nobel AAMA 2604 powder-coat applied
- Engineered, tested and approved to ICC-ES AC273 and is IBC/IRC-compliant
- Flat Top Rail for a beverage-friendly surface
- Hidden Fastener Systems
- No Welds, No Rivets
- Available in three textured powder coat colors: Black, White and Bronze.
- 15 Year Limited Warranty



Railing Parts and Accessories



Pre-Assembled Panels
Picket Deck panels come in 36" and 42" heights with 6' and 8' lengths. Picket stair panels come in 36" height and 6' and 8' lengths.



3" Aluminum Post Kits
Choose from 36" and 42" lengths. All parts are included to assemble one post. Surface mounting screws sold separately.



Gate Kits
Gate kits are 36" high installed and 38" wide. They fit up to a 40" opening and may be cut to fit smaller openings. Kits include self-closing hinges and a locking latch.



Hardware
All hardware is packaged in convenient kits. Options include: panel attach kits, stair panel attach kits, clip jigs and touch up paint, wall mount kits and more.



Lighting
Enhance your evening experience with lighting. Choose from Perimeter or Indirect Post Cap Lights.



ADA Handrails
Include handrails for added safety and comfort. Handrails are sold in convenient kits for easy planning and assembly.

All parts and accessories are available in Black, White and Bronze.



FLAT TOP RAIL

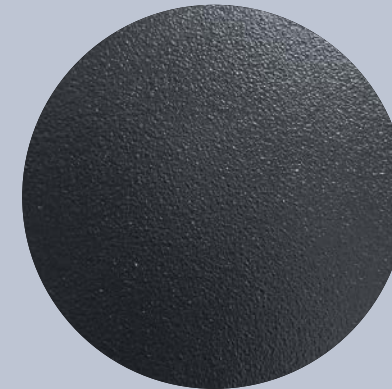


NO WELDS, NO RIVETS

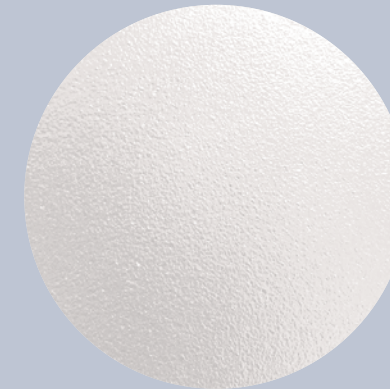


HIDDEN FASTENERS

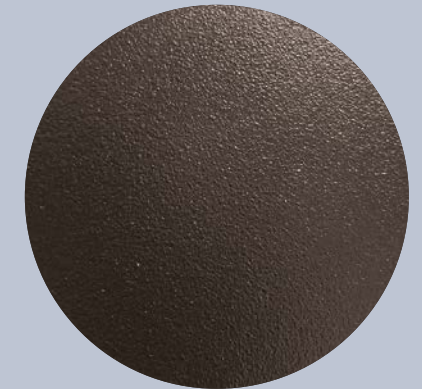
TEXTURED POWDER COAT COLORS



BLACK



WHITE



BRONZE

